



# Configuring CitectSCADA SNMP projects with MIB2CIT

---

A reference for CitectSCADA Customers

[illegible]

# Customer guide to basic CitectSCADA SNMP configuration

---

*Introduction*

---

*Intended Audience*

## Table of Contents

# Part I: Using MIB2CIT to set up and configure a test SNMP project

---

## 1 Building a simple SNMP test project in CitectSCADA

### 1.1 Preparing the CitectSCADA project

---

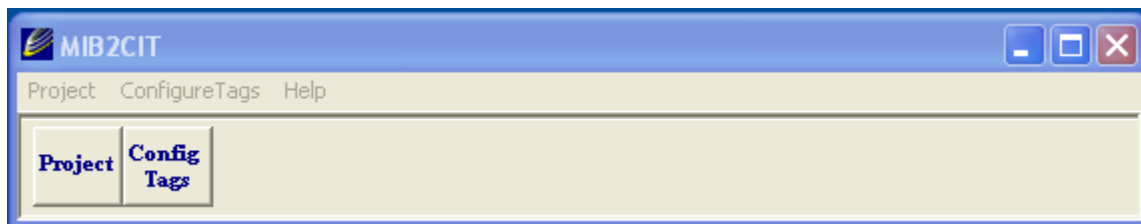
## 1.2 Installing & configuring MIB2CIT

- 

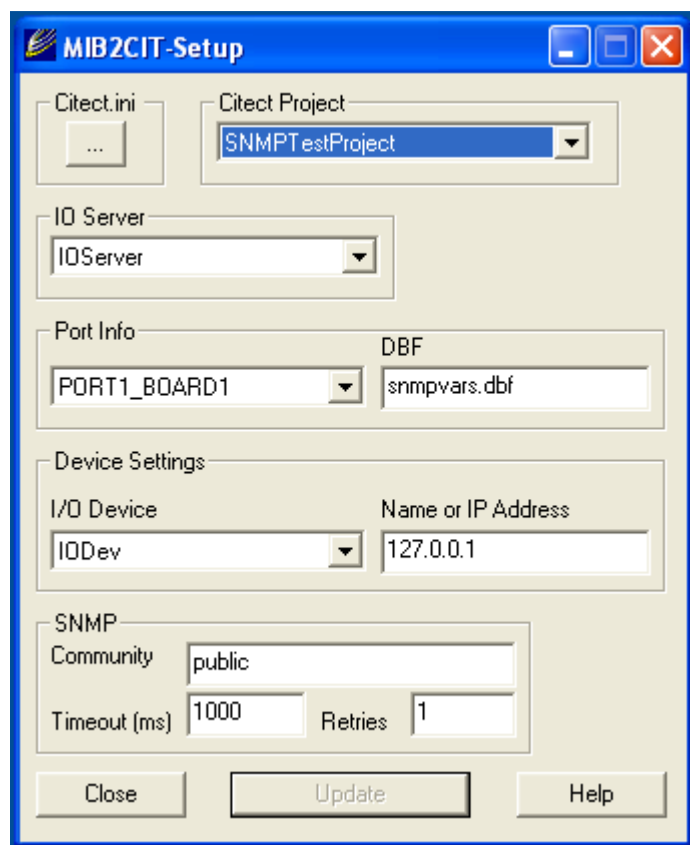


---

- 



-

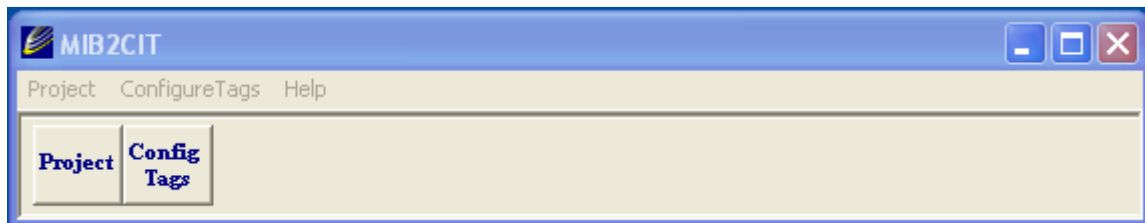


- 
- 
- 

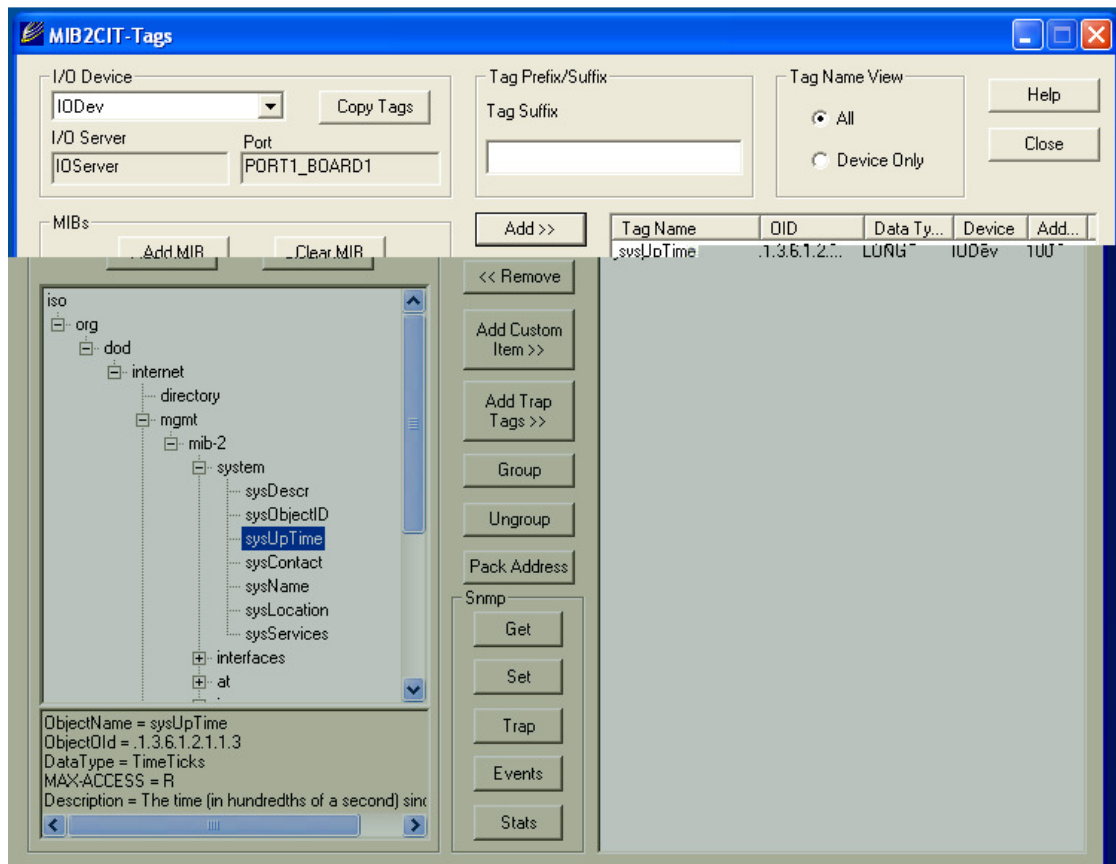
### 1.3 Verifying SNMP is working correctly before configuring CitectSCADA



■



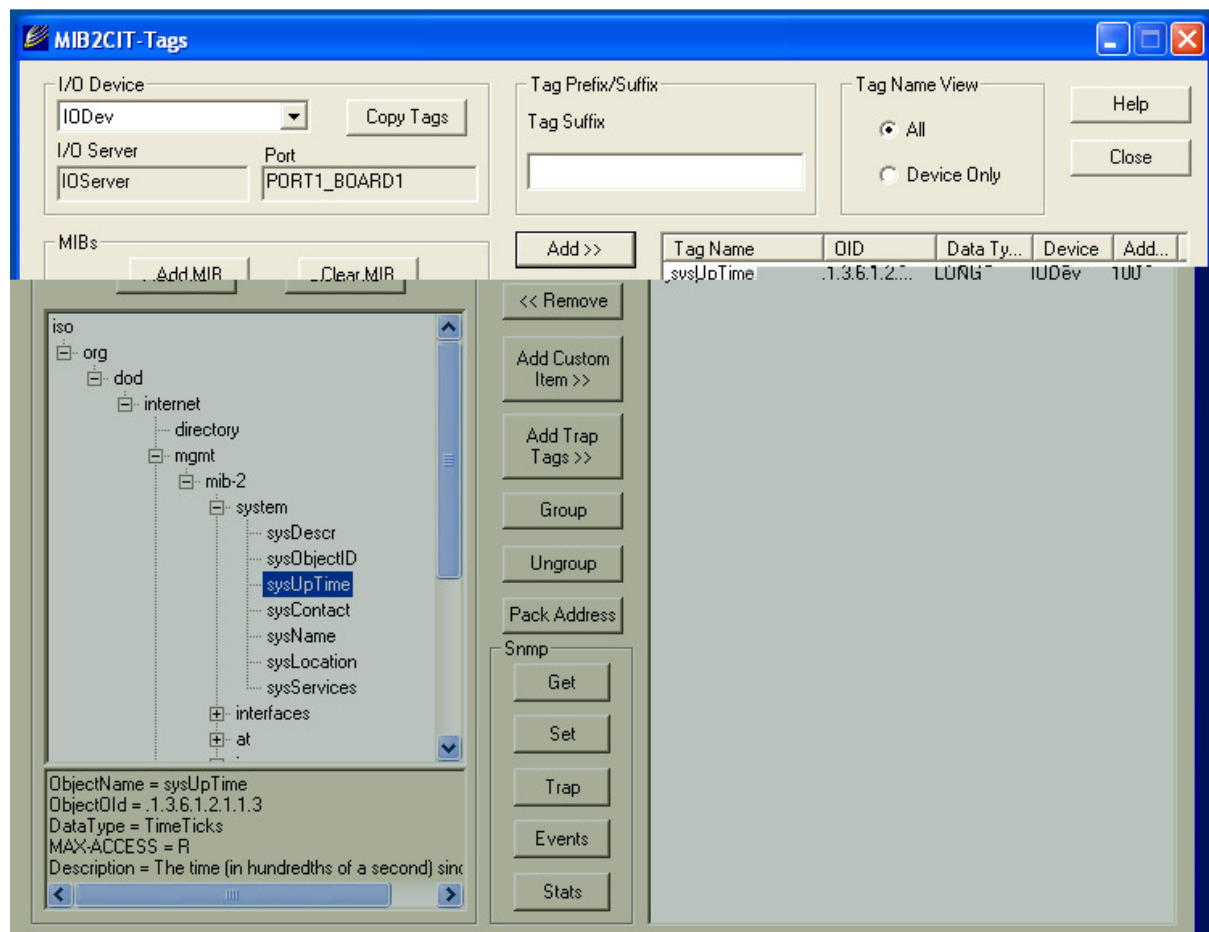
■



How cool is that? 😊



## 1.4 Creating CitectSCADA variable tags with MIB2CIT



### 1.4.1 Assigning tag suffixes to our OIDs and adding tags to our CitectSCADA Project



#### 1.4.2



**Variable Tags [ SNMPTestProject ]**

Variable Tag Name: sysUpTime

Cluster Name:  I/O Device Name: IODev

Address: N100 Data Type: LONG

Raw Zero Scale:  Raw Full Scale:

Eng Zero Scale:  Eng Full Scale:


Eng Units:  Format:

Deadband:


Comment:


Record: 1 Linked: No


### 1.4.3 Testing your tags in CitectSCADA


 **SNMPTest**


PagesTrends


 Back ▾


 ▾














MIB2CIT SNMP Tag Test

2568193

Machine UpTime  
OID .1.3.6.1.2.1.1.3

SYD-D-DAVET

Machine Name  
OID .1.3.6.1.2.1.1.5

# Additional Information

---

2 e