

Installation of Vijeo Citect onto a Magelis Smart iPC ~~running Windows XP Embedded (VDE)~~

Contents

| | | |
|----------|--|-----------|
| 1 | Section 1 - Introduction..... | 3 |
| 1.1 | Introduction | 3 |
| 1.2 | Background | 3 |
| 1.3 | Architecture | 3 |
| 2 | Section 2 - How to Install | 4 |
| 2.1 | Boot up the <u>Magelis Smart iPC</u> | 4 |
| 2.2 | Disable the EWF (Enhanced Write Filter) | 4 |
| 2.3 | Remove any unnecessary Software | 5 |
| 2.4 | Acquire Dynamic Link Library Files (.DLL Files) needed for install | 7 |
| 2.5 | Register the .DLL Files | 8 |
| 2.6 | Install Vijeo Citect | 9 |
| 2.7 | Vijeo Citect Hardware License Dongle Installation (Sentinel Keys) | 9 |
| 3 | Section 3 - Troubleshooting | 10 |
| 3.1 | ODBC Error Code..... | 10 |

1 Section 1 - Introduction

1.1 Introduction

The purpose of this document is to assist with the installation of Vijeo Citect onto a Magelis Smart iPC running the Microsoft Windows XP Embedded (XPe) Operating System.

1.2 Background

The Schneider Electric Magelis Smart iPC product line is typically only used for Vijeo Citect applications as a Webclient iPC. This install guide should be used to assist in setting up Vijeo Citect as a “Thick” Client with the full install of Vijeo Citect, allowing the iPC to operate as a Vijeo Citect Control Client or as a Vijeo Citect View Only Client. Running Vijeo Citect as an IO/RAT Server on the Magelis Smart iPC product line is not advisable unless the production project is small in size (HMI type configuration) due to the minimal hardware specifications shipped with the Magelis Smart iPC product line. The low processor speeds and smaller sizes of the Compact Flash storage media make it difficult to achieve real-time head response for the Vijeo Citect

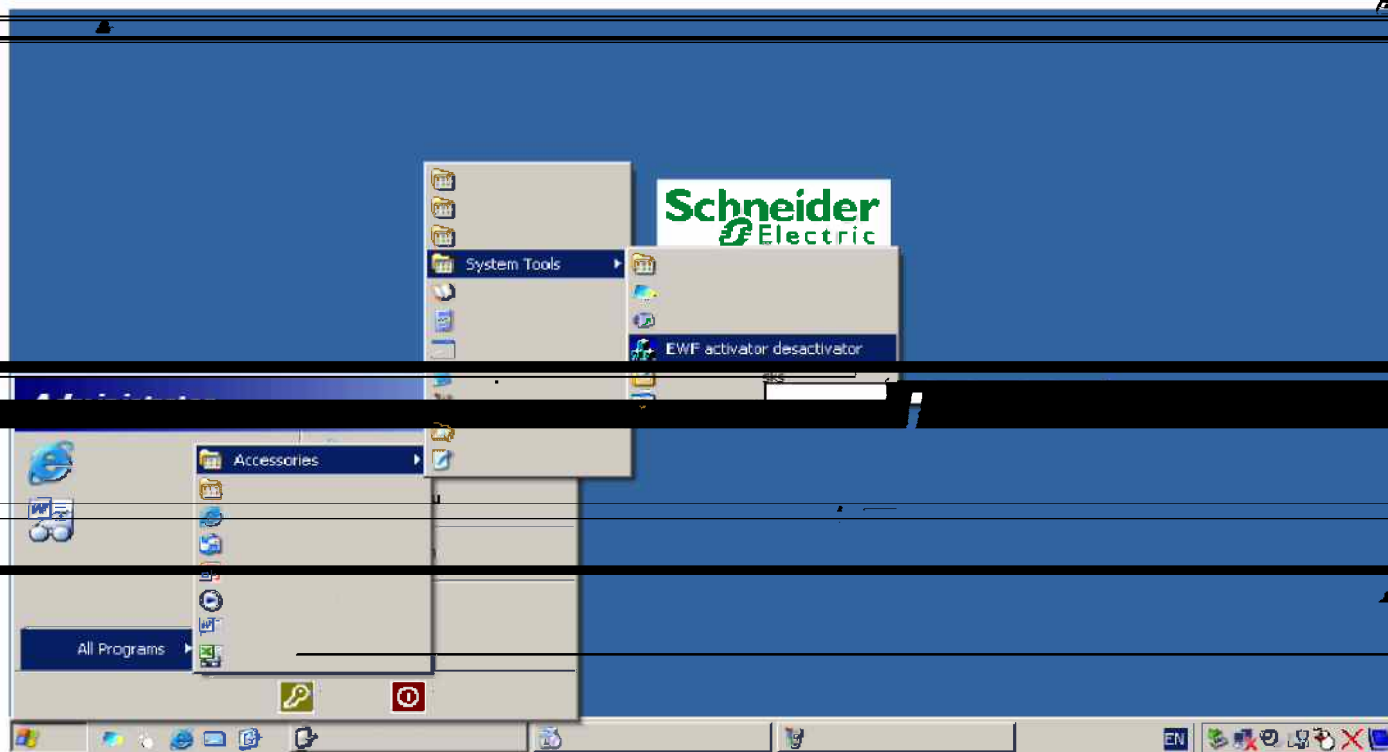
2 Section 2 – Install Guide

2.1 Boot up the Magelis Smart iPC

2.2 Disable the EWF (Enhanced Write Filter)

In order to install Vijeo Citect the (Enhanced Write Filter) EWF Manager will need to be disabled. The EWF is enabled by default which means all operating system modifications will be lost upon a restart of the iPC. The EWF Manager is a utility program which enables or disables the Enhance Write Filter protection. This tool is located in the following directory: C:\Program Files\Change EWF State\ChangeEWFstate.exe (Any changes will be take into account upon a Restart of the terminal)

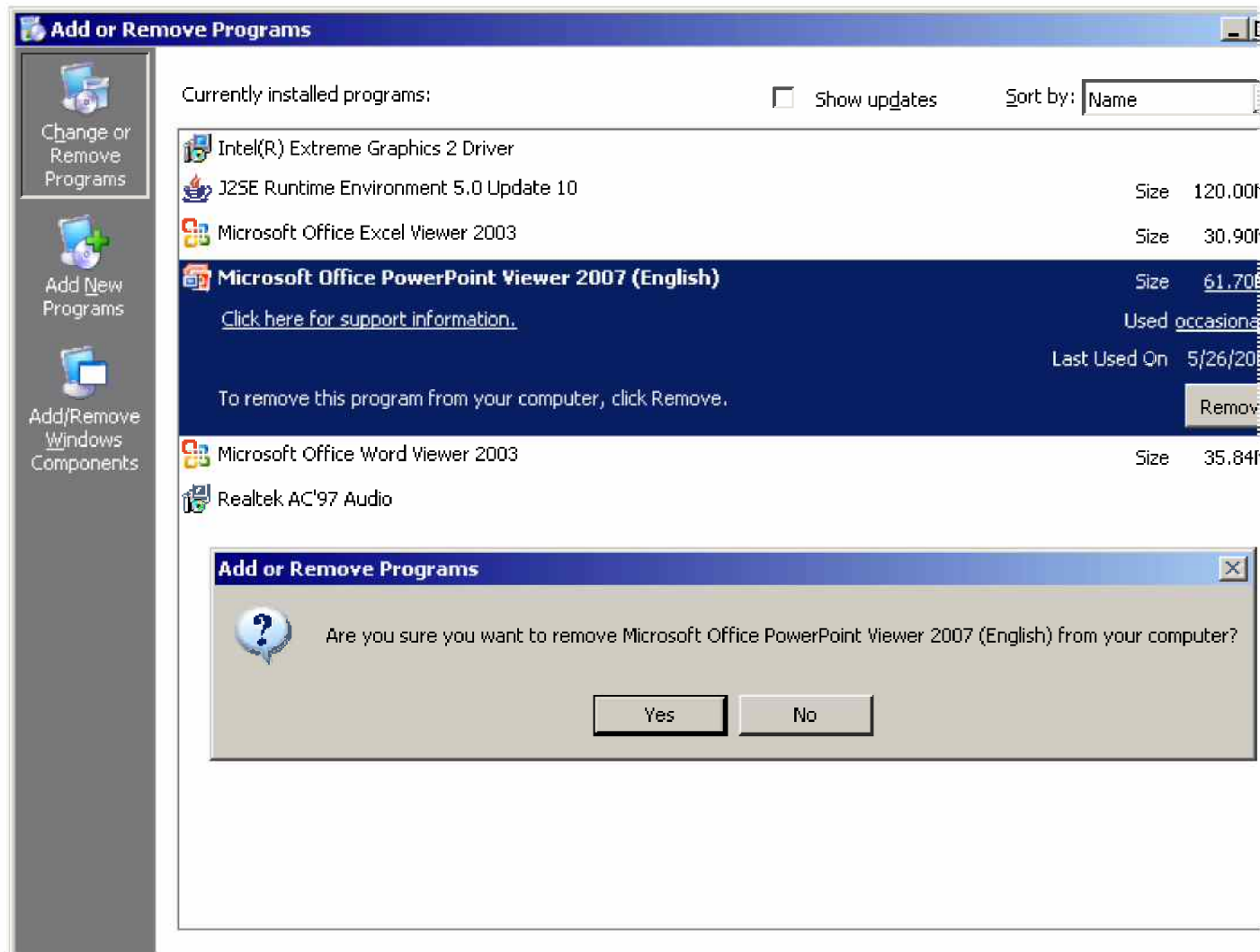
*** It is recommended to enable this feature for general security.*

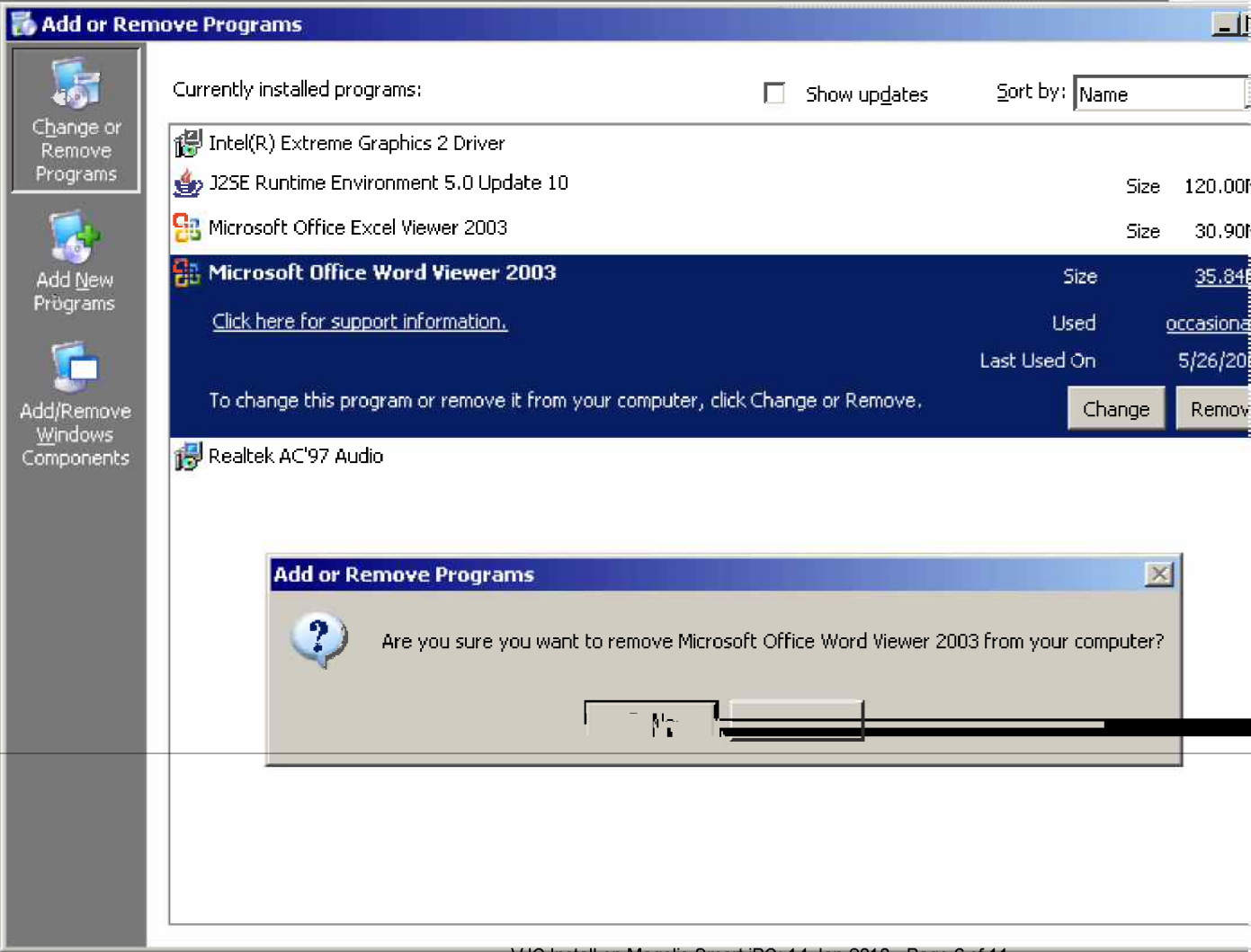


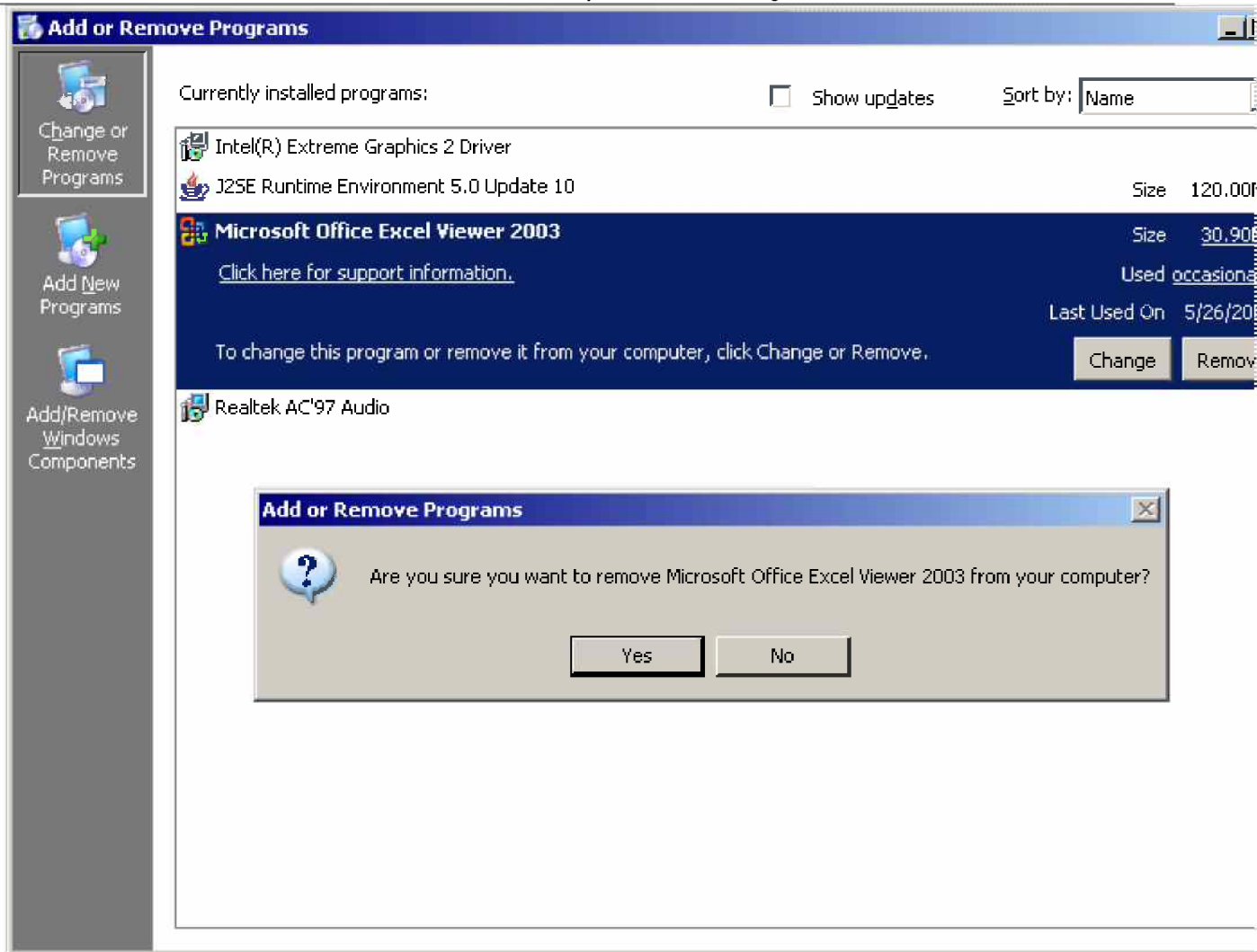
Accessibility ▶
Communications ▶
Entertainment ▶
UPDD ▶
Address Book ▶ Backlight Brightness
Calculator ▶ Character Map
Command Prompt ▶
Notepad ▶
Paint ▶
Windows Explorer ▶
WordPad ▶
Scheduled Task ▶
Utility Manager ▶ Location: C:\Program Files\Change EWF State

2.3 Remove any unnecessary Software

- Due to size limitations of the 2GB Compact Flash / Removal of unnecessary Software may be needed. (iPC hardware supplied with larger CF Cards can skip this step)







2.4 Acquire Dynamic Link Library Files (.DLL Files) needed for install

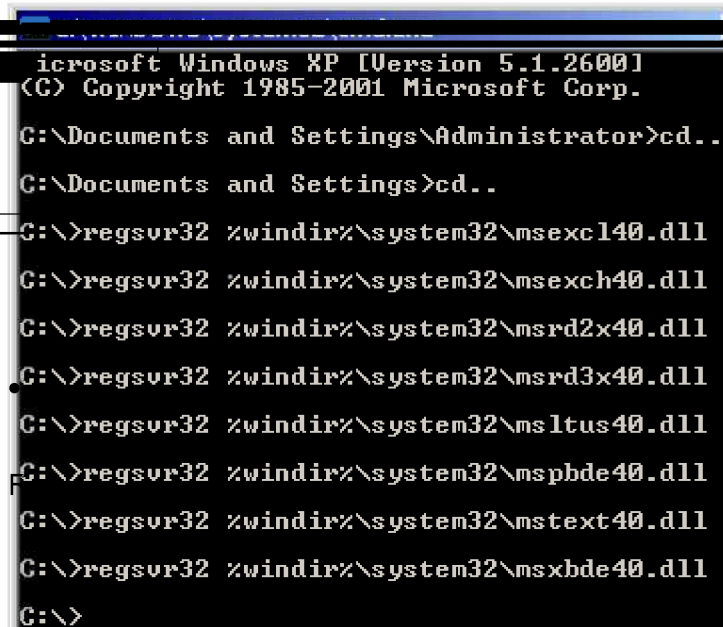
The Microsoft XPe Operating System is missing .DLL (Dynamic Link Library) files needed for the Vijeo Citect installation. Retrieval of this .DLL Files can be copied from a PC running Windows XP and pasted in to the appropriate location for the Microsoft XPe Operating System. (These .DLL files are also attached to the Online Knowledge Base Article for this posting) Copy the following .DLL Files to C:\Windows\System32

- Msexcl40.dll
- Msexch40.dll
- Msrd2x40.dll
- Msrd3x40.dll
- MsItus40.dll
- Mspbde40.dll

- Mstext40.dll
- Msxbde40.dll
- Odbcji32.dll

2.5 Register the .DLL Files

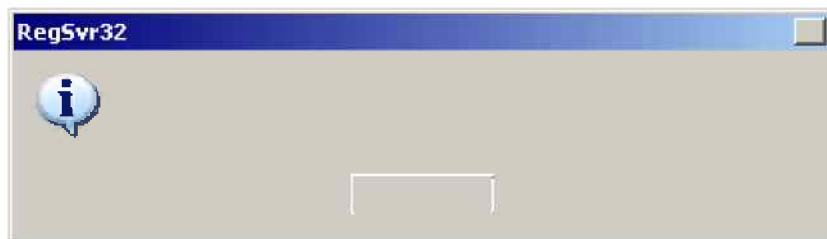
Once the .DLL files are copied it is required to register this .DLL Files using the Regsvr32 utility from a Command Prompt:



```
Microsoft Windows XP [Version 5.1.2600]
(C) Copyright 1985-2001 Microsoft Corp.

G:\Documents and Settings\Administrator>cd..
G:\Documents and Settings>cd..
G:\>regsvr32 %windir%\system32\msexc140.dll
G:\>regsvr32 %windir%\system32\msexch40.dll
G:\>regsvr32 %windir%\system32\msrd2x40.dll
G:\>regsvr32 %windir%\system32\msrd3x40.dll
G:\>regsvr32 %windir%\system32\msltus40.dll
G:\>regsvr32 %windir%\system32\mspbde40.dll
G:\>regsvr32 %windir%\system32\mstext40.dll
G:\>regsvr32 %windir%\system32\msxbde40.dll
G:\>
```

ft .DLL files (The Odbcji32.dll does not need to



2.6 Install Vijeo Citect

- Copy the Installation files for Vijeo Citect onto a USB Drive (Jump Drive, Thumb Drive)
- Place USB Drive into Magelis Smart iPC
- Install Vijeo Citect per normal install instructions from the Vijeo Citect Readme Documentation

2.7 Vijeo Citect Hardware License Dongle Installation (Sentinel Keys)

- Copy the following Sentinel Key driver from a windows XP PC with Vijeo Citect installed from the location: C:\Windows\system32\drivers

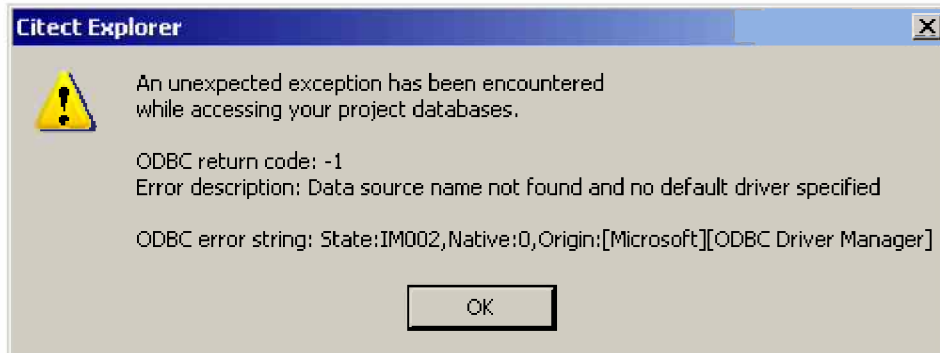
Sentinel.sys (Sentinel parallel driver) and

Sntnlusb.sys (Sentinel USB driver).

- Paste the above .SYS files onto the iPC into the same location: C:\Windows\system32\drivers
- Updated Sentinel key Drivers can be found at www.safenet-inc.com
- .SYS files are also attached to the associated Online Knowledge Base article for convenience

3 Troubleshooting

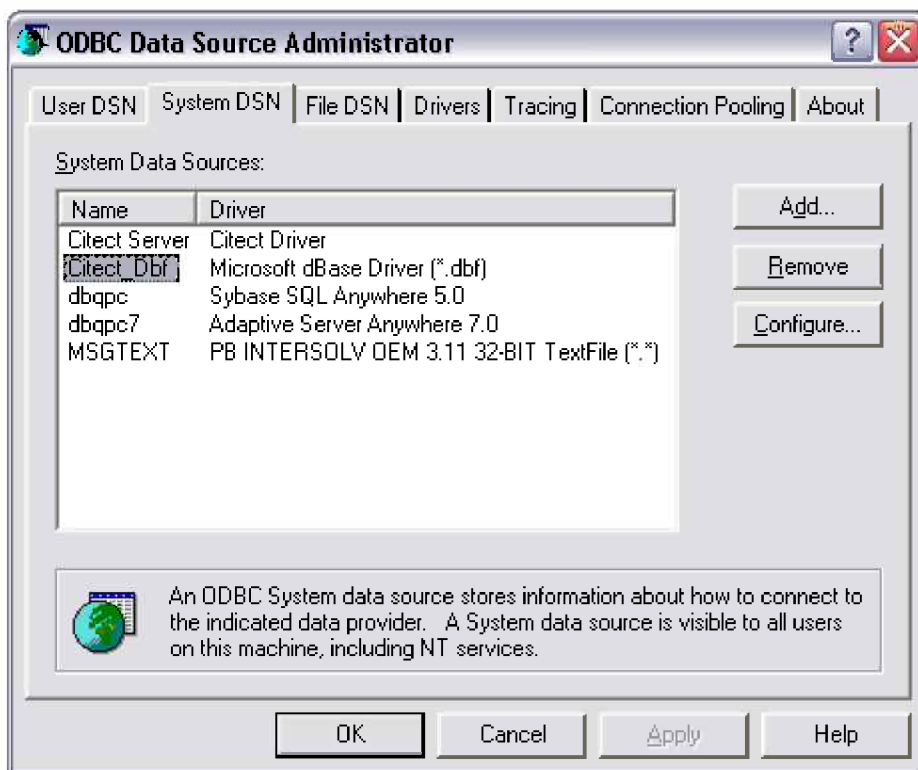
3.1 ODBC Error Code

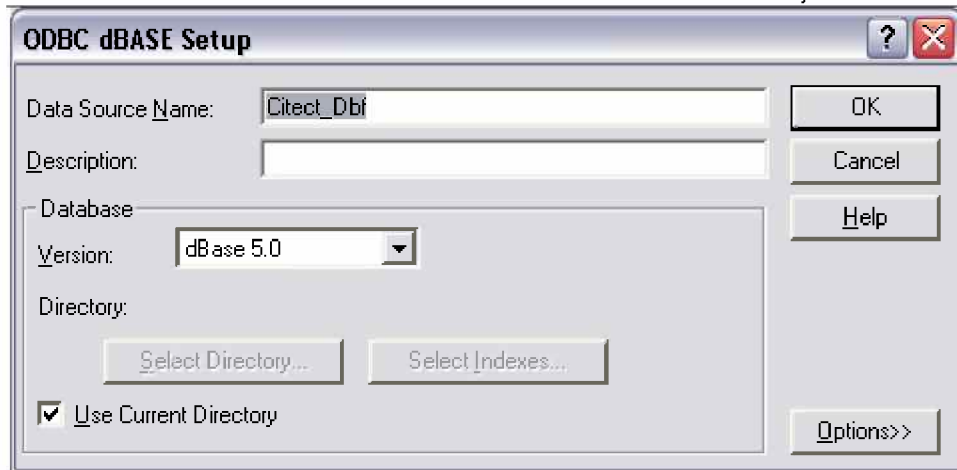


- Make sure the Odbcj32.dll is listed in the C:\Windows\System32 directory

Navigate to: Control Panel / Administrative Tools / Data Sources (ODBC)

System DSN Tab / Add / Microsoft dBase Driver (*.dbf) / Name = Citect_Dbf





** Email Support@Citect.com for additional information or updates to this whitepaper.