

# CitectFacilities 7.0

## Release Notes for Service Pack 3

---

This document describes the modifications and fixes made in CitectFacilities version 7.0 Service Pack 3 as well as providing installation information.

### Important:

As per recommended practice, all projects should be backed up prior to commencing the Service Pack installation.

### Important:

All projects *must* be upgraded and recompiled after installing this Service Pack. Failure to do so will result in conflicting database size messages. To force an upgrade, edit the Citect.ini file and set [CTEDIT] UPGRADE=1. Ensure that the **Incremental Compile** menu option  is not checked, or set [CTEDIT] INCREMENTALCOMPILE=0. Customers should also do an **Update Pages** (in Graphics  
A S T O BRU H tes.

### Important:

In v7.0 service pack 1, an attempt was made to translate all Editor/Period field text strings for French and German installs into their localised form. These changes, with the exception of German day of the month, were reversed in Service Pack 2. The majority of French and German customers, who are not currently running Service Pack 1, do not need to reconfigure their projects. However, customers upgrading from Service Pack 1 may need to update their projects to match the new drop down options. For more information see issues 36365.1 and 36365.2 on the following page, and Table 1 below.

Table 1 - French and German Editor/Period field options in Service Pack 3

**Known Issues:**

This Service Pack contains the known issues described below.

**Table 2 - Known Issues**


**Note:**

If you already have hot fixes installed on version 7.0, you should review this document carefully to ensure that the hot fixes you have installed are included in this Service Pack. In the event of a discrepancy contact your regional support office for assistance.

**Note:**

For general information about service packs, see Knowledge Base article Q2181.

This service pack applies to three of the products shipped with CitectFacilities version 7.0:

- CitectFacilities
- CitectFacilities Web Server
- CitectFacilities Internet Display Client

Separate service pack installers have been created for each of these products, allowing you to choose which products you wish to upgrade to Service Pack 3, depending on your requirements.

Table of Contents

Service Pack Installation.....	4
Service Pack Uninstall .....	5
Updated Files CitectFacilities - IDC .....	8
Updated Files CitectFacilities SCADA.....	9
Added Files CitectFacilities SCADA .....	13
Added Files CitectFacilities Web Server.....	13
Issues Resolved in this Service Pack .....	14

## Service Pack Installation

---

### Upgrading CitectFacilities 7.0 to Service Pack 3

The procedure for installing Service Pack 3 for CitectFacilities depends on whether you are an existing user of CitectFacilities version 7.0 or a new user.

#### Existing CitectFacilities version 7.0 Users

1. Run CitectFacilities SCADA 7.0 Service Pack 3.msp
2. Open Client Explorer, wait until upgrade has completed, and then close Explorer.

#### New CitectFacilities 7.0 Users

1. Install CitectFacilities 7.0.
2. Open Client Explorer for the first time and then close.
3. Run CitectFacilities SCADA 7.0 Service Pack 3.msp
4. Open Client Explorer, wait until the upgrade has completed, and then close Explorer.

### Upgrading CitectFacilities 7.0 Web Server to Service Pack 3

Installing Service Pack 3 for CitectFacilities Web Server requires that you install Service Pack 3 for CitectFacilities as well otherwise the web client will not work correctly. You should perform this installation as per one of the above two CitectFacilities user categories, then:

1. On your server(s) (machines running IIS), run CitectFacilities WebServer 7.0 Service Pack 3.msp. This will become CitectFacilities WebServer 7.0 Service Pack 3 on all your web clients.
2. On all your web client machines, take the following actions:
  - a. Open Control Panel > Add or Remove Programs > Remove Programs.
  - b. If this item is not listed in ARP, you should delete the %windir%\system32\client700 directory. (NB: %windir% indicates the default windows installation directory)
  - c. In CitectFacilities Web Deployment Control (Internet Explorer):
    - Client Control drop down menu
    - Save the deployment by selecting Save to save deployment.

### Upgrading CitectFacilities 7.0 IDC to Service Pack 3

Installing Service Pack 3 for CitectFacilities IDC requires that you install Service Pack 3 for CitectFacilities on your servers otherwise the IDC will not work correctly. You should perform installation as per one of the scenarios mentioned earlier (existing CitectFacilities versus new ones)

**Note**  
CitectFacilities

## Service Pack Uninstall

The procedure for removing (rolling back) a 7.0 service pack depends on which Operating System you are running.

### All Windows versions

Before following one of the procedures below, backup your citect.ini file to a temporary location. You can use the Computer Setup Editor (via Tools menu) to determine the location of this file. This step is required as the uninstall procedure may revert some settings back to their default. Restore the file to its original location upon completion of the uninstall procedure.

### Microsoft Windows XP SP2 or Microsoft Windows Server 2003

For each product you wish to uninstall:

1. Backup your citect.ini file (default path c:\windows\citect.ini), as the uninstall procedure may revert some settings back to their default.
2. Open Control Panel > Add or Remove Programs.
3. Left-click on the parent product.

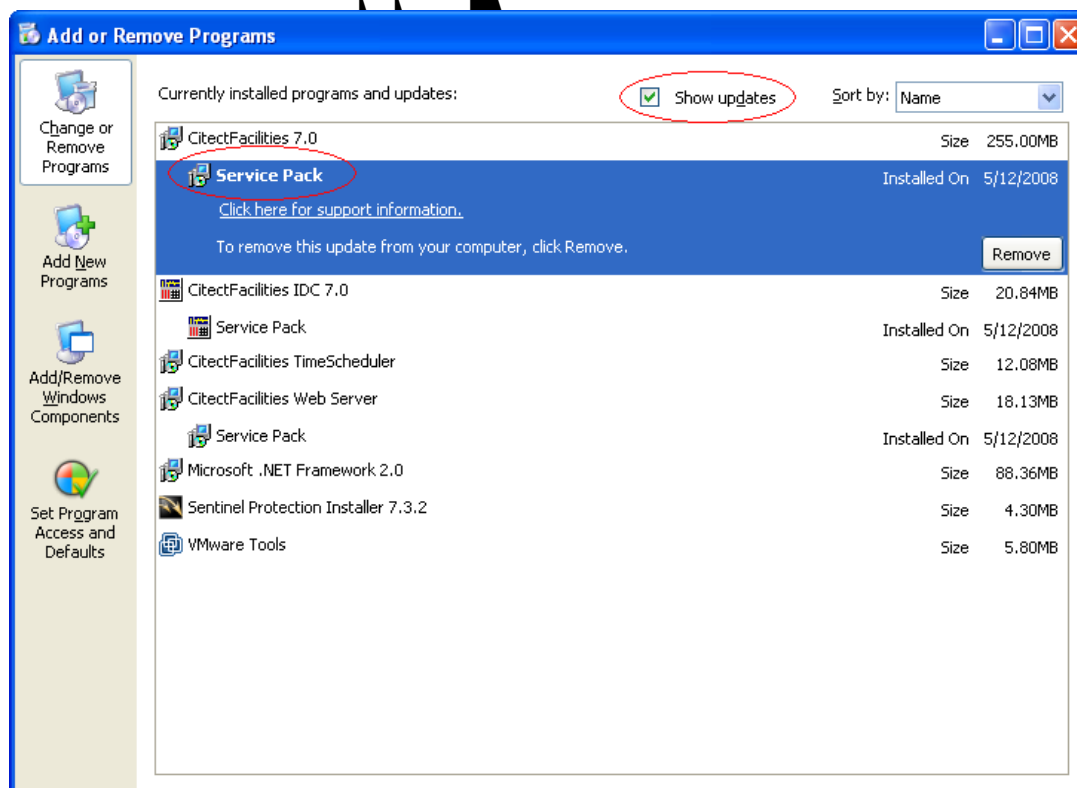
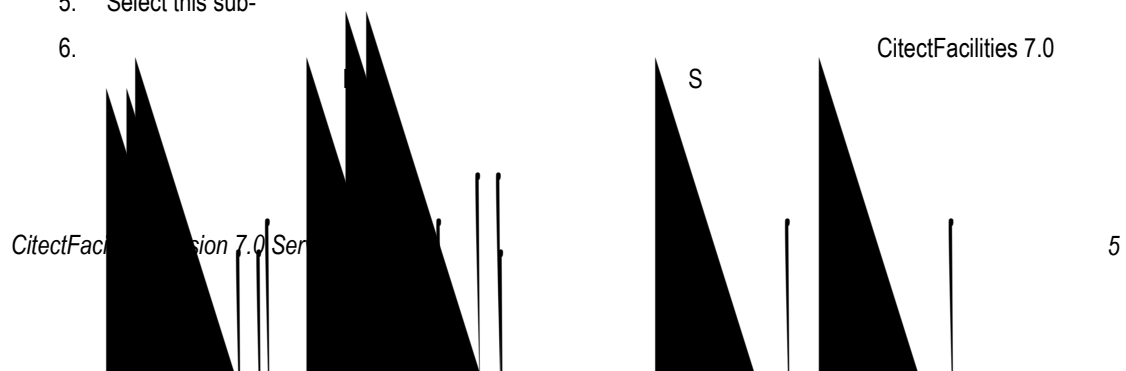


Figure 1: Service Pack visible as an update

4. You should see the service pack listed as a sub-entry under the parent product.
5. Select this sub-
- 6.



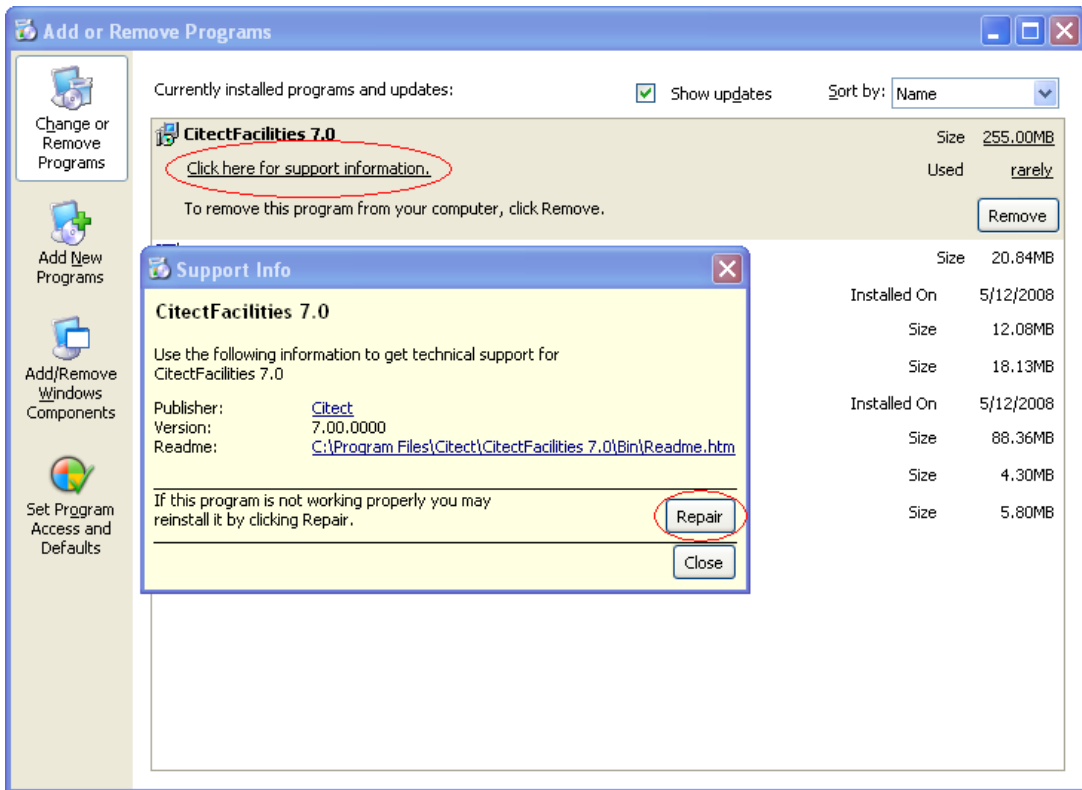


Figure 2: Support Info dialog in Windows XP SP2 and Windows 2003

7. B
8. After the repair process has finished, you should have a working version of the parent product without the service pack installed.

**Microsoft Windows XP SP1 or earlier or Microsoft Windows 2000**

Support for automatic installation of Service Pack 3 (SP3) is not available under these operating systems, so an uninstall of the service pack must be performed manually as follows:

1. Right-click on the program icon in the Start menu and select Uninstall.
2. For the product you wish to uninstall:  
 a. Copy the uninstall command from Table 3 and paste into the command prompt, then press **Enter**.

Table 3 - Service Pack 3 manual uninstall commands

Product	Uninstall Command
CitectFacilities SCADA 7.0 Service Pack 3	<code>msiexec /uninstall {8602BC49-CB7D-4219-AF16-CB7A9B546B18} /package {5EEE5297-A932-49F2-AFA7-ED05C2ACB24F} /qb</code>
CitectFacilities WebServer 7.0 Service Pack 3	<code>msiexec /uninstall {159AC762-C901-4199-88DF-A8E45C0C97D8} /package {B7A02776-729C-4594-AF91-EF18F349E3BE} /qb</code>
CitectFacilities IDC 7.0 Service Pack 3	<code>msiexec /uninstall {F4070A32-8A25-4A17-B40C-4CBB1F6ABF79} /package {8FA7830B-990E-4974-8E4D-80B74D14F2E0} /qb</code>

c. You should now see the product name has returned to the original pre-service pack name.

d. B E S CitectFacilities 7.0

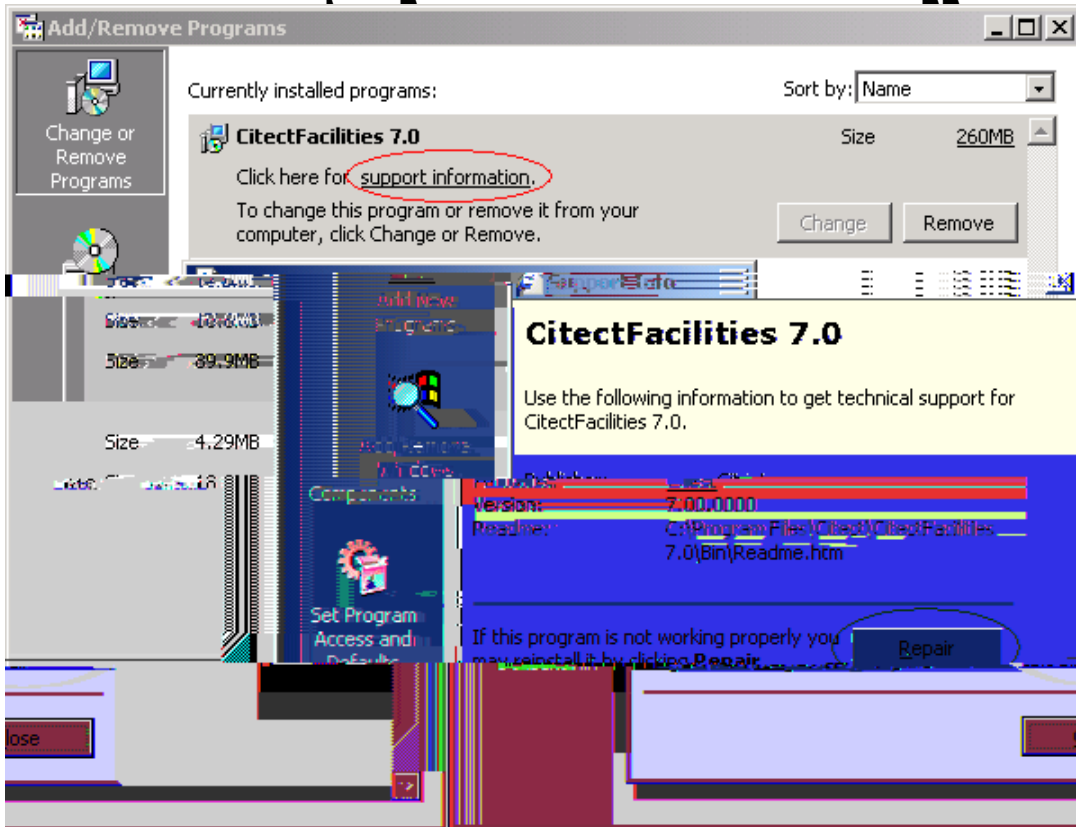
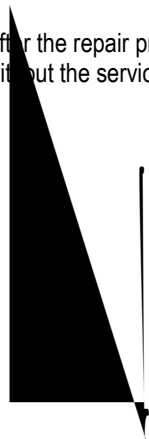


Figure 3: Support Info dialog in Windows XP SP1 and Windows 2000

e. B

f. After the repair process has finished, you should have a working version of the parent product without the service pack installed.













## Added Files CitectFacilities SCADA

---

Listed below are the files added to the **CitectFacilities SCADA** product after installing 7.0 Service Pack 3.


## Added Files CitectFacilities Web Server

---

Listed below are the files added to the **CitectFacilities WebServer** product after installing 7.0 Service Pack 3.


## Issues Resolved in this Service Pack

---

This Service Pack resolves the issues described below. If you have any hotfixes installed on your current version, please check if they are included in this service pack. If the hotfix is not included in the list below, or you have any concerns regarding the issues covered, please contact Support *before* installing this Service Pack.

	“ ”
	<b>CiText.Textbox control's Print Dialog fails to cancel printing when the Cancel Button is chosen</b>
	control would ignore the use of the "Cancel"
	“ ” “ ”

	“ ”
	Scan time doesn't effect the Tag subscription Poll
	“ ”

	InitChannel() which results in several problems “ one of which is blockMax is then zero which
	“ ”
	“ ”

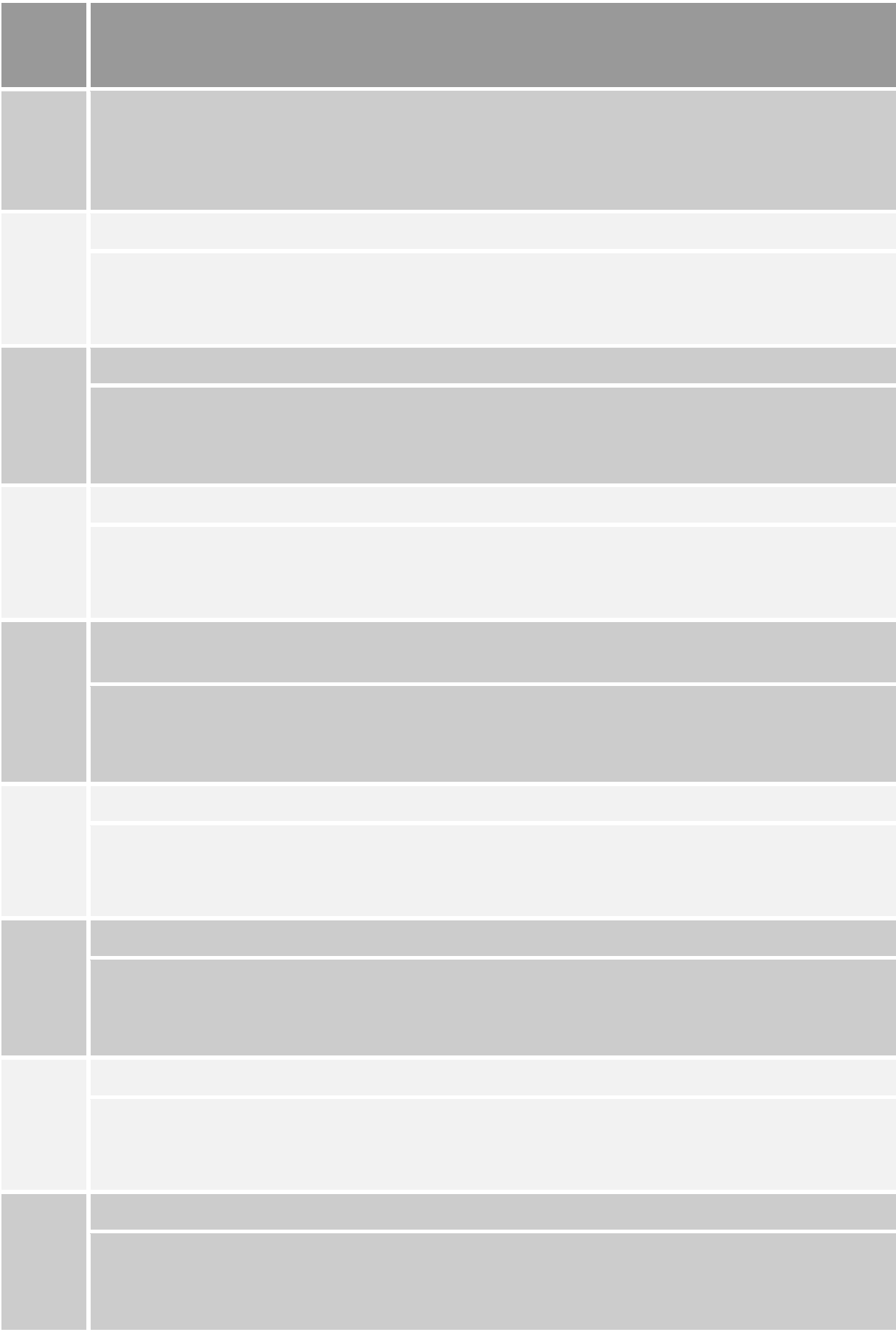


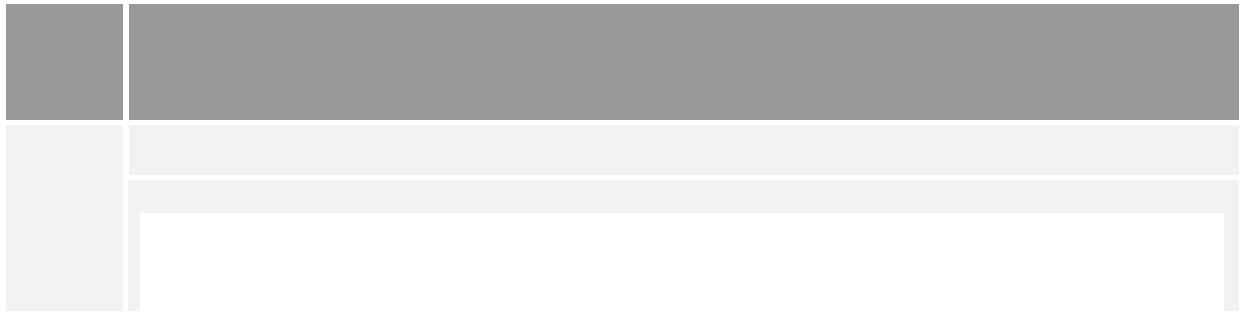




**Originally resolved in Service Pack 1**

These fixes are included in Service Pack 3.









	Citect's port 20222 (used by ODBC). This vulnerability has been secured.




**Originally resolved in Service Pack 2**

These fixes are included in Service Pack 3.

